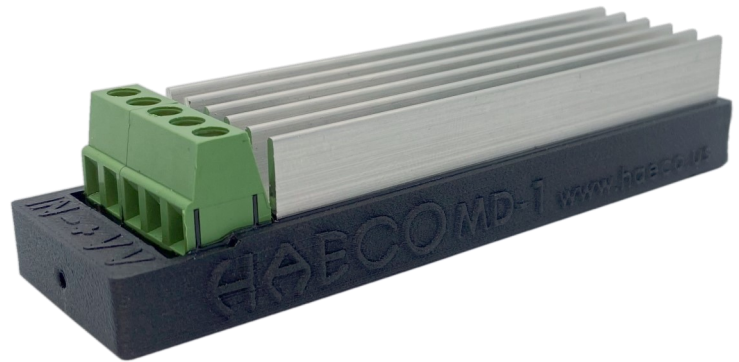


MD-1 MINI DRIVER

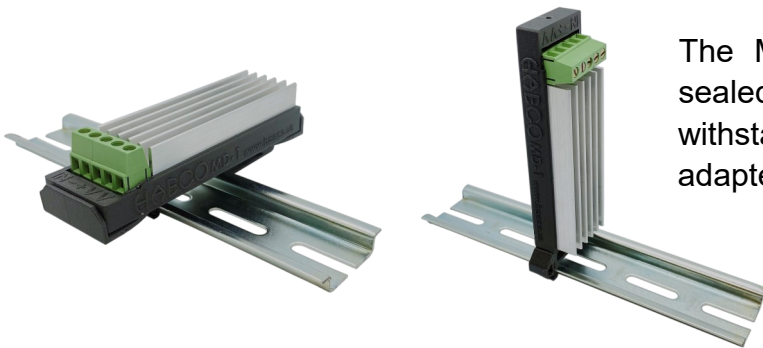
The HAECO MD-1 Mini Driver utilizes PWM driver technology to enhance performance of electrically activated valves and solenoids. What sets apart the MD-1 from its counterparts is its speed and resolution.

The MD-1 Mini Driver boasts turn-on and turn-off speeds in sub-millisecond times and resolution necessary to achieve precision dispensing in a variety of industries.

The MD-1 is designed to drive a single valve coil at lower voltages with low to medium electrical current. For higher voltage, higher power drivers see HAECO's CD-2 data sheet.



The MD-1 is compact and robust. Electronics are sealed and potted to a large external heat sink to withstand severe environmental conditions. Mounting adapters allow for back or end din rail mounting.



APPLICATIONS

- High speed hot and cold glue dispensing in packaging applications
- Print head driving
- High speed product assembly applications
- Robotic dispensing in automotive and electrical assemblies
- Glue stitching on high speed converting lines
- Engine fuel injection

Technical Features

Supply Voltage:	12-32 VDC
Input Voltage:	7-32 VDC
Input Resistance:	5.6k Ohm
Peak Current:	2 Amps*
Continuous Current:	1 Amp*
Pull-in Time:	0.1ms to 99.9ms in 0.1ms increments*
Hold Power:	1% to 100% in 1% increments (4 kHz PWM frequency)
Protections:	Reverse supply voltage, over current, short to ground, short to supply voltage

*The MD-1 can be modified for increased speed and current capabilities for specific OEM applications. Consult factory or authorized distribution center for customized modifications.

Dimensions

